



// TANGYE //

**HYDRAULIC
JACKS
& PUMPS**

//TANGYE//

With sustainability in mind, Tangye products are built to last.
Invest in an asset, not just a tool.



WHY CHOOSE TANGYE?

At **Tangye**, tradition meets innovation.

Founded in the heart of the United Kingdom, we've honed our craft to perfection over 170 years. Our commitment to quality workmanship is unmatched, ensuring that every product leaving our factory meets the highest standards for durability and performance.

TANGYE JACKS

With safety in mind, every jack is fitted with overload and overstroke protection, giving you peace of mind regarding the health and safety of your operators.

A wide range of capacities from 5 to 100 tonnes and operational from -20 to +50°C means these jacks are fully reliable and functional in endless industrial applications, even in the harshest of environments.

Options for vertical or horizontal use, low clearance, or load retaining rams provide a versatile range for any application.

TANGYE HYDRAPAK HAND PUMPS

Tangye Hydrapak's are globally trusted for their modular design and extensive customisability.

Ideal for operating standalone hydraulic equipment or for hydrostatic pressure integrity testing, the Hydrapak is a compact handpump that is compatible with a wide range of industrial fluids.

Available in pressures ranging from 110 to 1000 bar, the Hydrapak is compatible with most industrial hydraulic systems.

A standard range of accessories including oil reservoirs, relief valves and gauges creates over 500 combinations, meaning you can easily choose the perfect pump to suit your specific application.

- **Reliability, Quality and Sustainability** – Choose Tangye for quality, sustainable, industrial products you can rely on time and time again.
- **Ready to Use Immediately** – Our products are immediately ready to go straight out of the box, with no setup or installation costs.
- **Portable and Space-Efficient** – Lightweight, compact, and portable, the Tangye range is easily transportable and takes up minimal storage space.
- **User-Friendly Operation** – Ease of use by a single operator with no additional training required saves essential time on the job.
- **Low Maintenance** – Extremely low maintenance and easily serviceable by the user, eliminating downtime and hassle and minimising ongoing costs. For routine servicing, spare parts are readily available from stock.
- **Manufactured to the Highest Standards** – The entire Tangye range is manufactured, assembled, and tested at our premises in the UK. Our precise engineering, stringent testing, and ISO9001 Quality Management System guarantees quality for peace of mind.

JACKS



7
HYDRACLAW
5 TONNE

Tangye's exclusive all-steel jack, the Hydraclaw, is engineered for superior durability. Ideal for machine moving or applications with limited lifting clearance, its robust steel construction also ensures safe, reliable performance in explosive environments.



8
HYDRAMITE
6.5-15 TONNE

Compact yet powerful, the Hydramite range is the most portable of Tangye's jacks. With a lifting capacity of 6.5 to 15 tonnes and the ability to operate in any orientation, they are perfect for use in confined spaces.



9
HYDRALITE
20-100 TONNE

Versatility defines the Hydralite range. Offering lifting capacities from 20 to 100 tonnes with optional load sustaining rams or low clearance claws/toes, they are perfectly suited for all your safe lifting requirements.

PUMPS



19
HYDRAPAK
110-1000 BAR

The Tangye Hydrapak hydraulic hand pump features a modular design, available in working pressures from 110 to 1000 Bar, with various sizes of tanks and optional valves, skids, frames and more to meet your specific hydraulic system needs.



22
HYDROSTATIC TEST PUMP
110-1000 BAR

Tangye's Hydrostatic Test Pumps are ready-to-use hydraulic hand pumps that come fully equipped for testing your hydraulic system. Simply choose your required pressure from 110 to 1000 Bar, plug in and start testing with all necessary components included as standard.



23
SPECIAL ENGINEERED PRODUCTS

Tangye's dedicated engineering team is continually developing and enhancing our range. If you have special design requirements or requests, please contact us to explore tailored solutions.

WHICH JACK DO I NEED?

HYDRAMITE JACKS

The Hydramite range of hydraulic lifting jacks are small and powerful. The ability to hold the jack in one hand makes it extremely portable, while the high strength design enables a maximum lifting load of up to 15 tonnes.

Hydramite jacks are fully contained in an aluminium body machined from a single billet, eliminating exposure and reducing potential for damage to internal parts, all providing a long service life.

The Hydramite jack is an ideal selection for applications requiring portability and outstanding performance in a small footprint.



HYDRACLAW JACK

The Tangye Hydraclaw jack features a robust ferrous construction to cope with rough treatment, as well as use in environments where the use of aluminium would be hazardous.

Designed for low clearance applications, the Hydraclaw can lift loads of up to 5 tonnes with a minimum clearance of only 40.9mm, all while maintaining portability.

HYDRALITE JACKS

The Hydralite range of light weight lifting jacks are our most versatile. Offering lifting capacities ranging from 20 to 100 tonnes and stroke lengths of 6, 12 or 18 inches, the Hydralite jacks have an almost endless range of applications.

Additional features include a screwed ram and locking collar mechanism, designed to safely mechanically sustain the load without relying on hydraulic pressure. Some models can be fit with a removeable claw/toe, enabling the jack to lift loads with a lower clearance.

Owing to their reliable, portable design there are thousands of Hydralite jacks in use all over the world in an ever expanding range of applications.



TANGYE

TANGYE HYDRAULIC JACKS

Tangye jacks are well engineered and manufactured from premium materials.

When Tangye formed over 170 years ago we set the standard for lifting capability, compactness and ease of use.

Today we continue to lead by delivering outstanding reliability and efficiency.

Lightweight, and highly portable, Tangye hydraulic jacks allow heavy loads to be lifted, lowered, manoeuvred and positioned with maximum safety. The Tangye range offers lifting capacities from 5 to 100 tonnes and interface options to meet the needs of a variety of heavy lifting situations including claw/toe interface for low ground clearance and screwed rams for safe and sustained load retention.

The Tangye range of lightweight, aluminium jacks provide rigging and construction companies, and service and maintenance technicians with quick, versatile and safe lifting solutions.

Due to their lightweight design and ease of use, Tangye's Hydralite, Hydraclaw, and Hydramite hydraulic jacks can be safely operated by one person.

- **Lightweight** – High strength aluminium alloy construction minimises jack weight
- **Fail Safe operation** – Overload and overstroke protection, and load sustaining screwed ram option
- **Versatile deployment** – Can be used vertically or horizontally
- **Reliable** – All moving parts totally enclosed and lubricated by hydraulic oil
- **Easy to maintain** – Tangye jack design makes inspection and component replacement straightforward.

The compact Hydramite jacks are ideal portable tools for lifting heavy loads up to 15 tonnes. For lifts up to 100 tonnes, the Hydralite range has no equal in terms of its lightweight design, ease of operation and functionality.

Options include a claw/toe interface for lifting loads with low ground clearance, and a screwed ram for supporting loads over extended periods. For mining applications, Tangye also produces the Hydraclaw jack, its only all steel jack with both head and claw/toe interfaces.

All Tangye products are manufactured in the UK by Allspeeds Ltd using high quality European materials and in accordance with ISO 9001.

HYDRACLAW JACK

Tangye's only all steel jack, Hydraclaw's construction makes it ideal for mining engineers tackling heavy lifts with limited working space.

Powerful

5 tonne capacity on head or toe

High Lift

178mm / 3.07"

Fast Operation

5.5mm / 0.22" lift per stroke

Stable

Substantial base offers stability under load

Versatile

Horizontal or vertical operation

Safe

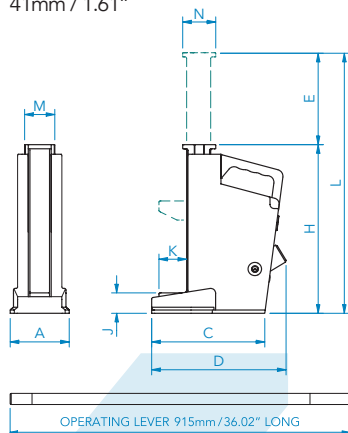
Positive stop feature prevents overstroking, pressure relief valve prevents overloading

Ease of Operation

Lifting / lowering controlled smoothly by operating lever, optimised lever effort

Low Clearance

41mm / 1.61"



Reliable

Jack hydraulics are totally enclosed

Robust Construction

Can withstand rough treatment, ferrous construction has led to its extensive use underground

Product Code	9501W
Ram Capacity	5 Tonne
Oil Capacity	0.68 Litres / 1.19 Pints
Weight of Jack	18 kg / 40 lbs
Weight of Lever	3.6 kg / 7.94 lbs
Working Pressure	618 bar / 8963 PSI
Maximum Effort on Lever	45 kgf / 99 lbsf
Stroke - mm (ins)	178 (7.00)
Lift per Stroke - mm (ins)	5.5 (0.21)
Dimensions	mm (in)
A - Width	114 (4.49)
C - Overall Length	220 (8.66)
D - Overall Depth	260 (10.24)
E - Stroke	178 (7.00)
H - Closed Height	325 (12.80)
J - Claw Height Closed	41 (1.61)
K - Claw Depth	52 (2.05)
L - Extended Height	503 (19.80)
M - Ram Width	57 (2.24)
N - Ram Depth	64 (2.52)
Service Kit Number	995125

TANGYE

HYDRAMITE JACKS

Tangye's Hydramite jacks are the ideal portable tool for lifting heavy loads.

Powerful

6.5 tonne, 10 tonne, 15 tonne capacity

Proven

Thousands in use all around the world

Well Engineered

Servicing and repair easily undertaken

Safe

Relief valve prevents overloading

Compact and Lightweight

Ideal portable tool

Versatile

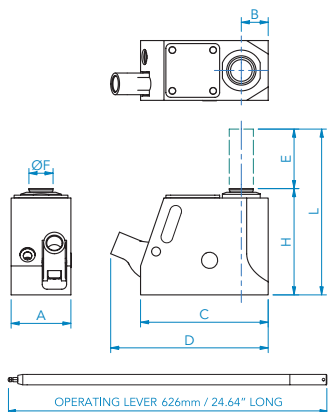
Operates in any orientation, totally enclosed, suitable for use in dusty conditions

Ease of Operation

Lift / lowering controlled smoothly by operating lever



Product Code	8104H	1105002	1105003
Capacity	6.5 Tonne	10 Tonne	15 Tonne
Oil Capacity - Litres (Pints)	0.10 (0.17)	0.13 (0.23)	0.27 (0.48)
Weight - kg (lbs)	3.9 (8.60)	6.3 (13.00)	10 (22.00)
Dimensions	mm (ins)	mm (ins)	mm (ins)
A - Width	76 (2.99)	76 (2.99)	92 (3.62)
B - Centre Ram to Base	40 (1.57)	40 (1.57)	48 (1.89)
C - Base Length	158 (6.22)	171 (6.73)	197 (7.76)
D - Overall Depth	190 (7.48)	207 (8.15)	236 (9.29)
E - Stroke	75 (2.95)	115 (4.50)	152 (6.00)
F - Ram Diameter	30 (1.18)	38 (1.50)	47.5 (1.87)
H - Closed Height	140 (5.51)	182 (7.17)	230 (9.06)
L - Extended Height	215 (8.46)	297 (11.69)	382 (15.06)
Service Kit Number	995052	995053	995054



HYDRALITE RANGE

Portable

Extensive use of high strength aluminium alloys minimises jack weight for portability.

Reliable

Hydralite's long service life makes it the choice of many rental operations. All moving parts are totally enclosed and lubricated by the hydraulic oil. Seals are highly resistant to deterioration under widely varying climatic conditions.

Safe

Overload & Overstroke Protection

A high pressure relief valve prevents lifting of excessive loads, while locking overloads applied to the ram. A fail-safe positive stop mechanism prevents overstroking of the ram by venting oil to the reservoir when the stroke limit is reached.

Load Sustaining

When loads are to be sustained for significant time a screwed ram should be selected. Screwed rams do not rely on fluid pressure to hold the load.

A range of lightweight jacks designed to lift, lower and position heavy loads with maximum safety.

Easy and Versatile Operation

Operator control is provided by the hexagon key in the operating lever. Most models have three lever positions offering the most suitable operating height. The jacks can be used vertically or horizontally due to the carefully positioned breather.

Low Clearance

Claw models are available for lifting loads with low ground clearance. Jacks with a claw must be fitted with an extended base and loads must not exceed the maximum specified as marked on the claw.

Wide Range

Capacities from 20 to 100 tonne with stroke options from 152mm to 457mm and choice of plain, claw or screwed rams.

Easy to Maintain

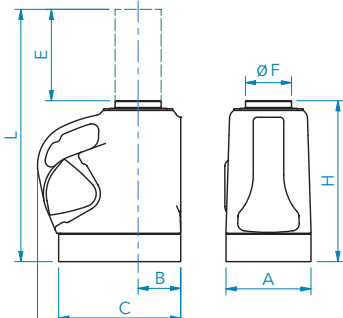
The jack design makes inspection and component replacement uncomplicated. Refer to service instructions for guidance.

Ready to Use

The drawbacks associated with using pumps and cylinders do not apply, Hydralite jacks are immediately ready for use.

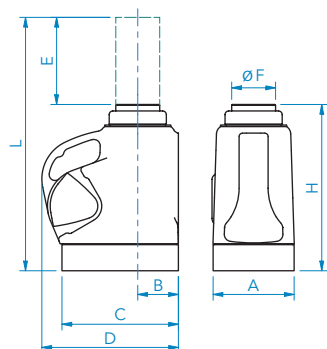
		Plain			Claw/Toe		Screwed		
									
Stroke (mm)		152	305	457	152	305	152	305	457
Stroke (Inches)		6	12	18	6	12	6	12	18
Load (Tonnes)	20	PS620	PS1220		PS620C	PS1220C	PS620S	PS1220S	
	30	PS630	PS1230		PS630C	PS1230C	PS630S	PS1230S	
	40			PS1840					PS1840S
	60	PS660	PS1260		PS660C	PS1260C	PS660S	PS1260S	
	100	P6100					P6100S		
Claw Load (Tonnes)	8				PS620C	PS1220C			
	12				PS630C	PS1230C			
	24				PS660C	PS1260C			

150MM (6") PLAIN HYDRALITE



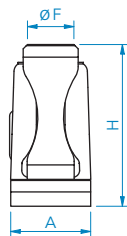
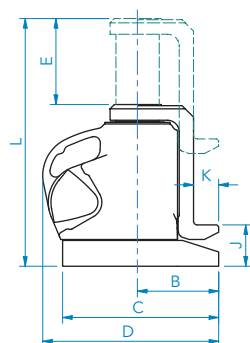
Product Code	PS620	PS630	PS660
Ram Capacity	20 Tonne	30 Tonne	60 Tonne
Oil Capacity - Litres (Pints)	0.64 (1.13)	0.88 (1.55)	1.71 (3.00)
Stroke - mm (ins)	152 (6.00)	152 (6.00)	152 (6.00)
Lift per Stroke - mm (ins)	1.1 (0.042)	0.7 (0.026)	0.3 (0.013)
Weight of Jack	10.9 kg / 24.03 lbs	3 15.4 kg / 3.95 lbs	27.4 kg / 60.40 lbs
Working Pressure	682 bar / 9,900 PSI	644 bar / 9,350 PSI	644 bar / 9,350 PSI
Maximum Effort on Lever	54 kgf / 120 lbf	52 kg / 115 lbf	52 kg / 115 lbf
Dimensions	mm (ins)	mm (ins)	mm (ins)
A - Width	121 (4.76)	140 (5.51)	190 (7.48)
B - Centre Ram to Base	60 (2.36)	60 (2.36)	92 (3.62)
C - Base Length	178 (7.01)	197 (7.76)	251 (9.88)
D - Overall Depth	214 (8.43)	235 (9.25)	286 (11.26)
E - Stroke	152 (6.00)	152 (6.00)	152 (6.00)
F - Ram Diameter	60 (2.36)	76 (2.99)	108 (4.25)
H - Closed Height	263 (10.35)	263 (10.35)	293 (11.54)
L - Extended Height	415 (16.35)	415 (16.35)	445 (17.54)
Service Kit Number	133506	133511	133518

150MM (6") SCREWED HYDRALITE



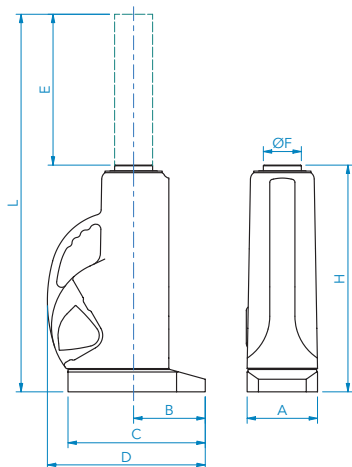
Product Code	PS620S	PS630S	PS660S
Ram Capacity	20 Tonne	30 Tonne	60 Tonne
Oil Capacity - Litres (Pints)	0.64 (1.13)	0.88 (1.55)	1.71 (3.00)
Stroke - mm (ins)	152 (6.00)	152 (6.00)	152 (6.00)
Lift per Stroke - mm (ins)	1.1 (0.042)	0.7 (0.026)	0.3 (0.013)
Weight of Jack	10.9 kg / 24.03 lbs	15.4 kg / 33.95 lbs	27.4 kg / 60.40 lbs
Working Pressure	682 bar / 9,900 PSI	644 bar / 9,350 PSI	644 bar / 9,350 PSI
Maximum Effort on Lever	54 kgf / 120 lbf	52 kg / 115 lbf	52 kg / 115 lbf
Dimensions	mm (ins)	mm (ins)	mm (ins)
A - Width	121 (4.76)	140 (5.51)	190 (7.48)
B - Centre Ram to Base	60 (2.36)	60 (2.36)	92 (3.62)
C - Base Length	178 (7.01)	197 (7.76)	251 (9.88)
D - Overall Depth	214 (8.43)	235 (9.25)	286 (11.26)
E - Stroke	152 (6.00)	152 (6.00)	152 (6.00)
F - Ram Diameter	60 (2.36)	76 (2.99)	108 (4.25)
H - Closed Height	289 (11.38)	292 (11.50)	330 (12.99)
L - Extended Height	441 (17.38)	444 (17.50)	482 (18.99)
Service Kit Number	133930	133932	133935

150MM (6") CLAW / TOE HYDRALITE



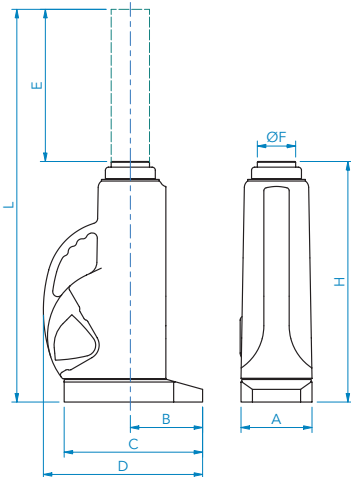
Product Code	PS620C	PS630C	PS660C
Ram Capacity	20 Tonne	30 Tonne	60 Tonne
Claw Capacity	8 Tonne	12 Tonne	24 Tonne
Oil Capacity - Litres (Pints)	1.14 (2.00)	1.71 (3.00)	2.84 (5.00)
Stroke - mm (ins)	152 (6.00)	152 (6.00)	152 (6.00)
Lift per Stroke - mm (ins)	1.1 (0.042)	0.7 (0.026)	0.3 (0.013)
Weight of Jack	16.7 kg / 37 lbs	23.4 kg / 52 lbs	43.7 kg / 97 lbs
Weight of Claw	5.5 kg / 12 lbs	7.6 kg / 17 lbs	21.2 kg / 47 lbs
Working Pressure	682 bar / 9,900 PSI	644 bar / 9,350 PSI	644 bar / 9,350 PSI
Maximum Effort on Lever	54 kgf / 120 lbf	52 kg / 115 lbf	52 kg / 115 lbf
Dimensions	mm (ins)	mm (ins)	mm (ins)
A - Width	121 (4.76)	140 (5.51)	190 (7.48)
B - Centre Ram to Base	125 (4.92)	143 (5.63)	181 (7.13)
C - Base Length	246 (9.69)	273 (10.75)	339 (13.35)
D - Overall Depth	279 (10.98)	303 (11.93)	376 (14.80)
E - Stroke	152 (6.00)	152 (6.00)	152 (6.00)
F - Ram Diameter	60 (2.36)	76 (2.99)	108 (4.25)
H - Closed Height	277 (10.91)	282 (11.10)	328 (12.91)
J - Claw Height Closed	67 (2.64)	73 (2.87)	73 (2.87)
K - Claw Depth	41 (1.61)	45 (1.77)	48 (1.89)
L - Extended Height	429 (16.91)	434 (17.10)	480 (18.91)
Service Kit Number	133930	133932	133935

300MM (12") PLAIN HYDRALITE



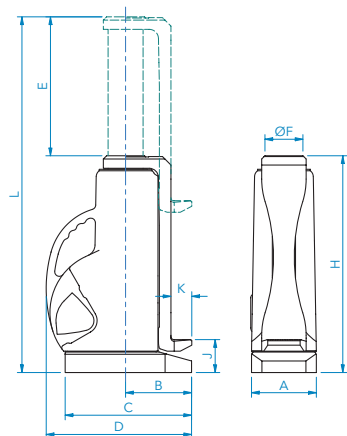
Product Code	PS1220	PS1230	PS1260
Ram Capacity	20 Tonne	30 Tonne	60 Tonne
Oil Capacity - Litres (Pints)	1.14 (2.00)	1.71 (3.00)	2.84 (5.00)
Stroke - mm (ins)	305 (12.00)	305 (12.00)	305 (12.00)
Lift per Stroke - mm (ins)	1.1 (0.042)	0.7 (0.026)	0.3 (0.013)
Weight of Jack	16.7 kg / 37 lbs	23.40 kg / 52 lbs	43.7 kg / 97 lbs
Working Pressure	682 bar / 9,900 PSI	644 bar / 9,350 PSI	644 bar / 9,350 PSI
Maximum Effort on Lever	54 kgf / 120 lbf	52 kg / 115 lbf	52 kg / 115 lbf
Dimensions	mm (ins)	mm (ins)	mm (ins)
A - Width	121 (4.76)	140 (5.51)	190 (7.48)
B - Centre Ram to Base	125 (4.92)	143 (5.63)	181 (7.13)
C - Base Length	246 (9.69)	273 (10.75)	339 (13.35)
D - Overall Depth	289 (11.38)	311 (12.24)	384 (15.12)
E - Stroke	305 (12.00)	305 (12.00)	305 (12.00)
F - Ram Diameter	60 (2.36)	76 (2.99)	108 (4.25)
H - Closed Height	438 (17.24)	451 (17.76)	500 (19.69)
L - Extended Height	743 (29.24)	756 (29.76)	805 (31.69)
Service Kit Number	133506	133511	133518

300MM (12") SCREWED HYDRALITE



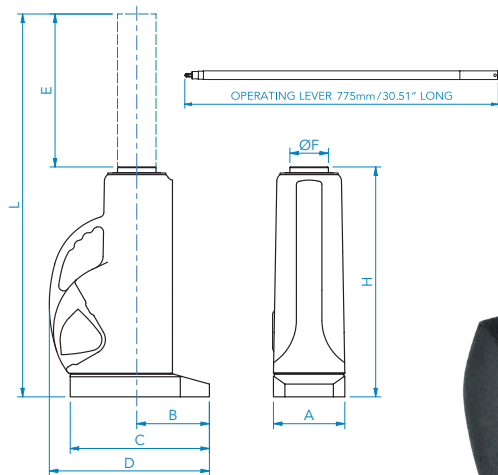
Product Code	PS1220S	PS1230S	PS1260S
Ram Capacity	20 Tonne	30 Tonne	60 Tonne
Oil Capacity - Litres (Pints)	1.14 (2.00)	1.71 (3.00)	2.84 (5.00)
Stroke - ins mm (ins)	305 (12.00)	305 (12.00)	305 (12.00)
Lift per Stroke - mm (ins)	1.1 (0.042)	0.7 (0.026)	0.3 (0.013)
Weight of Jack	16.7 kg / 37 lbs	23.40 kg / 52 lbs	43.7 kg / 97 lbs
Working Pressure	682 bar / 9,900 PSI	644 bar / 9,350 PSI	644 bar / 9,350 PSI
Maximum Effort on Lever	54 kgf / 120 lbf	52 kg / 115 lbf	52 kg / 115 lbf
Dimensions	mm (ins)	mm (ins)	mm (ins)
A - Width	121 (4.76)	140 (5.51)	190 (7.48)
B - Centre Ram to Base	125 (4.92)	143 (5.63)	181 (7.13)
C - Base Length	246 (9.69)	273 (10.75)	339 (13.35)
D - Overall Depth	289 (11.38)	311 (12.24)	384 (15.12)
E - Stroke	305 (12.00)	305 (12.00)	305 (12.00)
F - Ram Diameter	60 (2.36)	76 (2.99)	108 (4.25)
H - Closed Height	464 (18.27)	479 (18.86)	536 (21.10)
L - Extended Height	769 (30.27)	784 (30.86)	841 (33.10)
Service Kit Number	133930	133932	133935

300MM (12") CLAW / TOE HYDRALITE



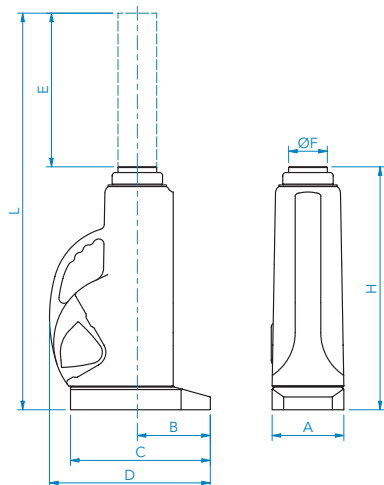
Product Code	PS1220C	PS1230C	PS1260C
Ram Capacity	20 Tonne	30 Tonne	60 Tonne
Claw Capacity	8 Tonne	12 Tonne	24 Tonne
Oil Capacity - Litres (Pints)	1.14 (2.00)	1.71 (3.00)	2.84 (5.00)
Stroke - mm (ins)	305 (12.00)	305 (12.00)	305 (12.00)
Lift per Stroke - mm (ins)	1.1 (0.042)	0.7 (0.026)	0.3 (0.013)
Weight of Jack	16.7 kg / 37 lbs	23.40 kg / 52 lbs	43.7 kg / 97 lbs
Weight of Claw	5.5 kg / 12 lbs	7.6 kg / 17 lbs	21.2 kg / 47 lbs
Working Pressure	682 bar / 9,900 PSI	644 bar / 9,350 PSI	644 bar / 9,350 PSI
Maximum Effort on Lever	54 kgf / 120 lbf	52 kg / 115 lbf	52 kg / 115 lbf
Dimensions	mm (ins)	mm (ins)	mm (ins)
A - Width	121 (4.76)	140 (5.51)	190 (7.48)
B - Centre Ram to Base	125 (4.92)	143 (5.63)	181 (7.13)
C - Base Length	246 (9.69)	273 (10.75)	339 (13.35)
D - Overall Depth	288 (11.34)	311 (12.24)	381 (15.00)
E - Stroke	305 (12.00)	305 (12.00)	305 (12.00)
F - Ram Diameter	60 (2.36)	76 (2.99)	108 (4.25)
H - Closed Height	452 (17.80)	470 (18.50)	533 (20.98)
J - Claw Height Closed	67 (2.64)	73 (2.87)	73 (2.87)
K - Claw Depth	41 (1.61)	45 (1.77)	48 (1.89)
L - Extended Height	757 (29.80)	775 (30.50)	838 (32.98)
Service Kit Number	133506	133511	133518

450MM (18") PLAIN HYDRALITE



Product Code	PS1840
Ram Capacity	40 Tonne
Oil Capacity	3.7 Litres / 7.81 Pints
Weight	47.7 kg / 105.16 lbs
Working Pressure	632 bar (9166 PSI)
Max Effort on Lever	50 kgf / 110.23 lbsf
Stroke - mm (ins)	457 (18)
Lift per Stroke - mm (ins)	0.5 (0.02)
Dimensions	mm (ins)
A - Width	190 (7.48)
B - Centre Ram to Base	178 (7.01)
C - Base Length	324 (12.76)
D - Overall Depth	378 (14.88)
E - Stroke	457 (18.00)
F - Ram Diameter	89 (3.50)
H - Closed Height	686 (27.01)
L - Extended Height	1143 (45.01)
Service Kit Number	133529

450MM (18") SCREWED HYDRALITE



Product Code	PS1840S
Ram Capacity	40 Tonne
Oil Capacity	3.7 Litres / 7.81 Pints
Weight	47.7 kg / 105.16 lbs
Working Pressure	632 bar (9166 PSI)
Max Effort on Lever	50 kgf / 110.23 lbf
Stroke - mm (ins)	457 (18)
Lift per Stroke - mm (ins)	0.5 (0.02)
Dimensions	mm (ins)
A - Width	190 (7.48)
B - Centre Ram to Base	178 (7.01)
C - Base Length	324 (12.76)
D - Overall Depth	378 (14.88)
E - Stroke	457 (18.00)
F - Ram Diameter	89 (3.50)
H - Closed Height	718 (28.27)
L - Extended Height	1175 (46.27)
Service Kit Number	133934



TANGYE

100 TONNE HYDRALITE

The 100 tonne Hydralite is powered by two internal pumps. The low pressure, fast-speed plunger moves the ram out quickly, up to a load of 8 tonnes on the ram, before transfer to the high pressure plunger becomes necessary.

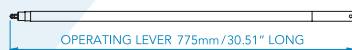
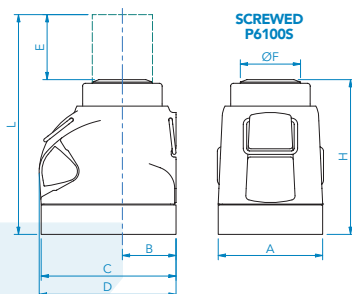
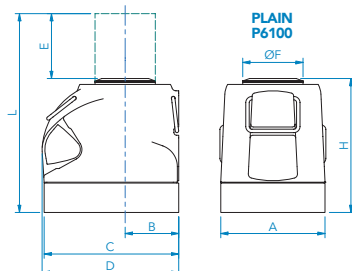
The lift of the ram per stroke of the lever is 1.1mm on low pressure and 0.1mm on high pressure.



PLAIN



SCREWED



Product Code	P6100	P6100S
Ram Type	Plain	Screwed
Ram Capacity	100 Tonne	100 Tonne
Oil Capacity - Litres (Pints)	2.23 (3.92)	2.3 (4.05)
Stroke - mm (ins)	152 (6.00)	152 (6.00)
Lift per Stroke High - mm (ins)	0.1 (0.005)	0.1 (0.005)
Lift per Stroke Low - mm (ins)	1.1 (0.043)	1.1 (0.043)
Weight of Jack	49 kg / 108 lbs	53 kg / 117 lbs
Working Pressure	640 bar / 9,280 PSI	640 bar / 9,280 PSI
Maximum Effort on Lever	79 kgf / 175 lbsf	79 kgf / 175 lbsf
Dimensions	mm (ins)	mm (ins)
A - Width	241 (9.49)	241 (9.49)
B - Centre Ram to Base	124 (4.88)	124 (4.88)
C - Base Length	310 (12.20)	310 (12.20)
D - Overall Depth	317 (12.48)	317 (12.48)
E - Stroke	152 (6.00)	152 (6.00)
F - Ram Diameter	140 (5.51)	140 (5.51)
H - Closed Height	313 (12.32)	357 (14.06)
L - Extended Height	465 (18.31)	509 (20.04)
Service Kit Number	995058	

HYDRAPAK PUMPS

Tangye Hydrapak: Versatile Solutions for Every Hydraulic System

Tangye Hydrapaks are globally trusted for their modular design and extensive customisability. With over 500 combinations available, you can find the perfect pump tailored to your specific needs.

Fast

Two speed operation gives rapid prefill or no load approach, push button changeover to high pressure

Compact

Small in size but develops up to 1000 bar pressure

Portable

Lightweight aluminium keeps weight down to 4.5 kg

Safe

Optional factory fitted relief valve prevents over pressurisation

Range

Seven working pressures from 110 bar to 1000 bar available

High Flow

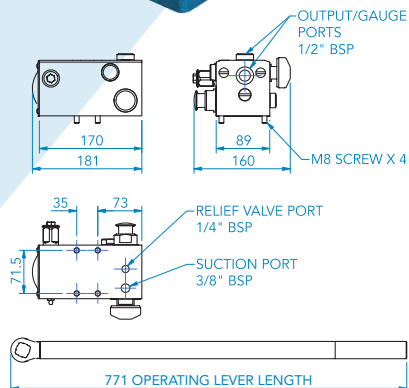
Interchangeable plungers allow selection of optimum pressure / flow characteristics

Seals

Choice of EP or Nitrile seals

Accessories

Double acting valve, cisterns, tanks, frames, gauges and fixing kits are available



Pressure / Flow Characteristics

	PHO6000		PHO5000		PHO4000		PHO3000		PHO2000		PHO1000		PHO0000	
	BAR	PSI	BAR	PSI	BAR	PSI	BAR	PSI	BAR	PSI	BAR	PSI	BAR	PSI
Max Pressure H.P. Stage	110	1600	172	2500	310	4500	448	6500	552	8000	700	10000	1000	14,500
Max Pressure L.P. Stage	52	750	52	750	52	750	52	750	52	750	52	750	52	750
	CC	CU INS	CC	CU INS	CC	CU INS	CC	CU INS	CC	CU INS	CC	CU INS	CC	CU INS
Displacement per Stroke H.P. Stage	22.61	1.38	14.47	0.883	8.13	0.496	5.65	0.345	4.57	0.279	3.62	0.221	2.5	0.153
Displacement per Stroke L.P. Stage	50.8	3.1	50.8	3.1	50.8	3.1	50.8	3.1	50.8	3.1	50.8	3.1	50.8	3.1

Cubic Centimetres (CC) and Cubic Inches (CU INS)

TANGYE

HYDRAPAK ACCESSORIES

Fluid Compatibility

The standard pump is supplied with nitrile seals suitable for use with mineral oils, water, oil/water emulsions, paraffin and glycerine. The pump body should not be left in contact with water for prolonged periods. After using salt water in the pump, thoroughly flush clean. Ethylene Propylene (E.P.) seals are available to order for applications using phosphate ester based hydraulic fluids and vegetable based brake fluid. E.P. seals are compatible with skydrol 500B and LD4. Please contact our technical department if in doubt.

Pressure Relief Valve

A factory fitted pressure relief valve may be fitted to the pump and set at any specified pressure between 56 and 700 bar. We strongly recommend that all Hydrapak are fitted with a pressure relief valve to prevent overloading and exceeding maximum safe working pressures.

Gauges

100 mm gauges and fixing kit are available for horizontal mounting of a pressure gauge above the top face of the pump. For pumps with a double acting valve a fixing kit for vertical mounting is supplied. Seven standard gauges corresponding to the seven standard pressure ratings are available.

Double Acting Valve

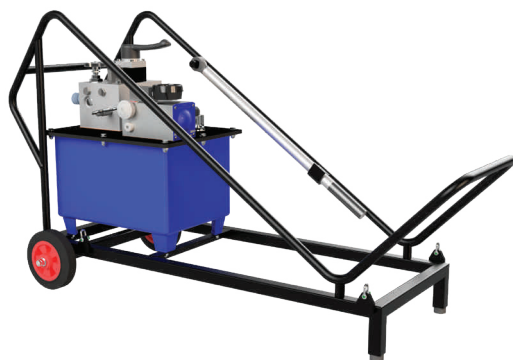
A three position, four port valve for control of double acting cylinders is offered as a factory fitted option. Valve outlets are tapped 3/8 NPT. There is no release valve assembly fitted to the pump body and although internal leakage of the valve is minimal, isolation valves should be fitted to circuits where pressure must be sustained.

Tanks

A range of standard tanks to satisfy most requirements is illustrated in the Hydrapak Configurator on p21. The Hydrapak can easily be fitted to custom built tanks.

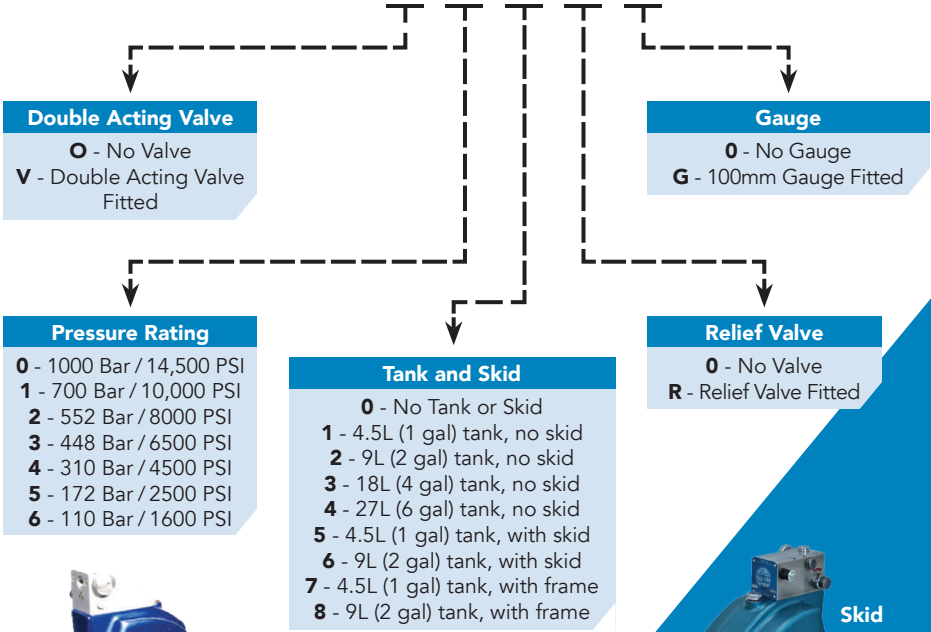
Interchangeable Plungers

High/low pressure plunger kits can be supplied to change the pressure/flow characteristics to any of the seven standards.



HYDRAPAK CONFIGURATOR

P H



Tubular
Frame



Skid

HYDROSTATIC TEST PUMP

Hydrostatic testing is a vital element in verifying gas and fluid pressure vessels such as pipelines, cylinders, boilers, and fuel tanks. The Tangye HTP Hydrostatic Test Pump is a self-contained, portable unit capable of providing up to 1000 Bar working pressure.

Hydrostatic Test Pump supplied complete with tank, skid, handle & gauge

Range of pressures available

Relief valve fitted as standard

Compatible with a range of fluid media

Hoses available on request

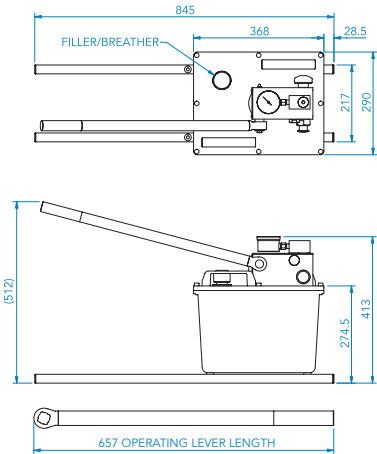
Robust design

23 kg total dry weight

Up to 1000 Bar working pressure

16 Litre capacity across the pressure range

High pressure and low pressure stages with manual change over at pump



Model Number	H.P. Stage Max		L.P. Stage Max		L.P. Stage Displacement per Stroke (CC)	Valve Type	H.P. Stage Displacement per Stroke (CC)	Outlet Port	Suction Port
	Bar	PSI	Bar	PSI					
HTP110	110	1600	52	750	50.8	2-way	22.6	3/8" BSPP	3/8" BSPP
HTP170	172	2500	52	750	50.8	2-way	14.5	3/8" BSPP	3/8" BSPP
HTP310	310	4500	52	750	50.8	2-way	8.1	3/8" BSPP	3/8" BSPP
HTP440	448	6500	52	750	50.8	2-way	5.7	3/8" BSPP	3/8" BSPP
HTP550	552	8000	52	750	50.8	2-way	4.6	3/8" BSPP	3/8" BSPP
HTP700	700	10000	52	750	50.8	2-way	3.6	3/8" BSPP	3/8" BSPP
HTP1000	1000	14500	52	750	50.8	1-way	2.5	3/8" BSPP	3/8" BSPP

SPECIAL ENGINEERED PRODUCTS



Tangye's considerable experience and engineering skills, along with cutting edge design and manufacturing facilities, enables Tangye to work with customers to fulfil specific non-standard requirements through tailor made designs, modifications or adaptations.

Contact Tangye to discuss your requirements.

All products are manufactured and tested in the UK using quality European materials and in accordance with ISO 9001. Tangye equipment is used in a wide range of industries including Construction, Industrial, Automotive, Aerospace, Mining, Rail, Nuclear and Offshore.



TANGYE

Designed and manufactured in the UK by:

Allspeeds Ltd

Royal Works
Atlas Street
Clayton-Le-Moors
Accrington
Lancashire
BB5 5LW

Tel: **+44 (0)1254 615 100**

Email: **info@tangyejacks.com**

Web: **www.tangyejacks.com**



Mod Number: 21461 Date: 11/06/24 Revision: 3

The information provided in this literature is 'as is' with no guarantee of accuracy or completeness.