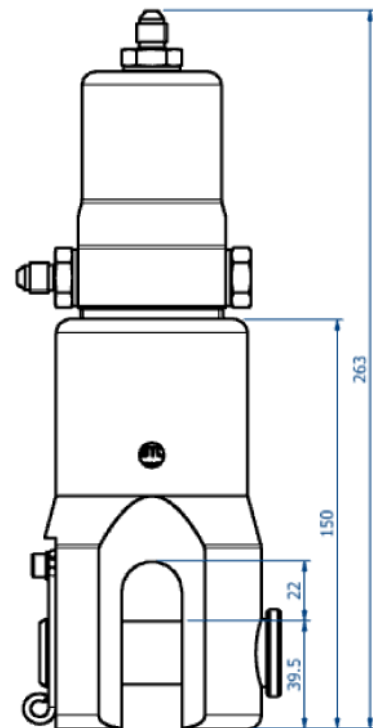
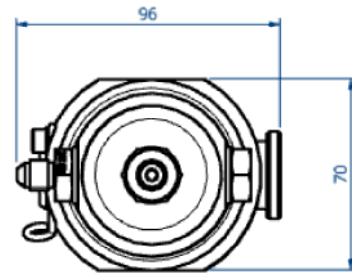


## HCP22 - Cutting Unit Part No - SK4895



- Heavy duty cutter designed for use in severe working conditions
- Closed jaw design
- Anvil pin is easily removed to allow the tool to be positioned on the rope
- Corrosion resistant stainless steel construction
- Ideal for operation in confined spaces
- 1 tonne cutting force at 200 bar
- Cutting speed of 0.1s when supplied with 9L/min hydraulic supply
- Cutting Capacity –  $\varnothing$ 14mm polypropylene rope
- Supplied with JIC No 4 fittings
- Approx weight in air – 5.5kg
- Swept volume cut stroke – 0.014 litres
- Swept volume return stroke – 0.007 litres
- Optional support brackets and guarding are available on request
- Double acting design for easy servicing and operation