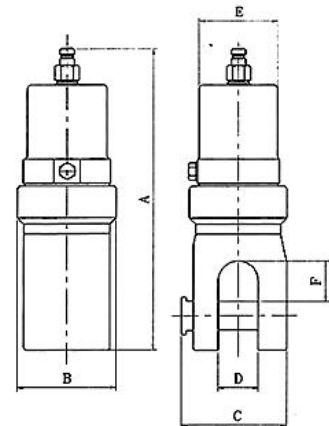


TECHNICAL INFORMATION – WIRE ROPE CUTTERS

Model WC

- Designed to cut wire rope up to 75mm diameter.
- The units are available in either spring or hydraulic return.
- They can also be supplied with pumps, hoses & couplings.
- The rope is inserted by either pushing the rope through the opening or by withdrawing the anvil pin to place the rope inside the anvil. The pin is then returned to hold the rope in place.



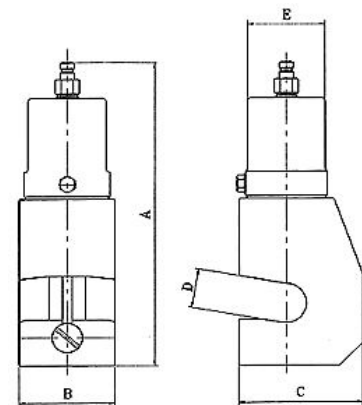
WC-TYPE

Model No.	Wire/Rope Capacity mm	Operating Pressure bar	Swept Volume cm ³	Approx. Weight kg	Cutter Dimensions (mm)					
					A	B	C	D	E	F
WC22 (D)	22	700	55	6.5	300	80	82.5	32	63.5	31.5
WC38 (D)	38	700	145	11	322	102	110	42	82	43
WC54 (D)	54	700	375	20	416	122	135	60	107	62
WC75 (D)	75	700	510	34	452	138	174	85	120	78
WC75DHD	75	700	740	40	440	172	174	85	137	79
WC38DLP	38	220	575	11.5	344	102	110	42	127	43

D = double-acting HD = heavy duty LP = low pressure

Model WCO

- Designed to cut wire rope up to 54mm diameter.
- Open sided to allow easy positioning of the cutter along a rope length - particularly useful when cutting in confined spaces.
- The units are available in either spring or hydraulic return.



WCO - TYPE

Model No.	Wire/Rope Capacity mm	Operating Pressure bar	Swept Volume cm ³	Approx. Weight kg	Cutter Dimensions (mm)				
					A	B	C	D	E
WCO22 (D)	22	700	55	8	295	76	95	25	63.5
WCO38 (D)	38	700	145	20.5	327	100	130	42	82
WCO54 (D)	54	700	375	30	460	125	165	55	107
WCO38DLP	38	220	575	21	349	100	130	42	127

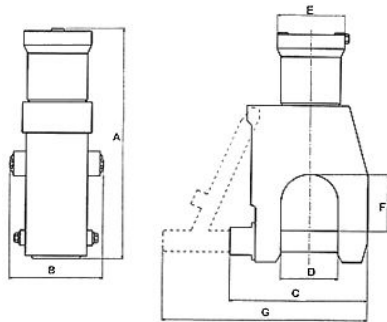
D = double-acting LP = low pressure

Model RCV

The RCV models are designed for sub-sea service and for use in severe working conditions such as offshore; the cutters have been manufactured to meet customers requirements in stainless steel or lightweight aluminium and for ROV applications.

The RCV range of cutters feature hydraulically powered anvil pins for remote actuation. This enables the ROV operator to capture and sever the cable or wire rope via the manipulator arm.

By closing the anvil pin the rope is held in place. A hardened steel guillotine blade is then hydraulically driven through the rope. The blade is returned and the anvil pin retracted ready for the next cut.



CV - TYPE

Model No.	Wire/Rope Capacity mm	Operating Pressure bar	Swept Volume cm ³	Approx. Weight kg	Cutter Dimensions (mm)						
					A	B	C	D	E	F	G
RCV75	75	690 (*190)	805 (*30)	35.5	435	155	266	85	185	87	363
RCV115	115	690 (*190)	2110 (*50)	125	698	253	343	125	180	132	509
RCV135	135	690 (*190)	2900 (*50)	176	785	288	419	150	193	162	569

* = values for auxiliary cylinders